

# Pas de deux

(steps of two)  
from The Nutcracker

arranged for woodwind ensemble by  
SHEA LOLIN

PYOTR IILICH TCHAIKOVSKY

**Andante maestoso** ( $\text{♩} = 69$ )



7



13

**A**



18



23

**B**

**Poco stringendo Poco più mosso** ( $\text{♩} = 76$ )



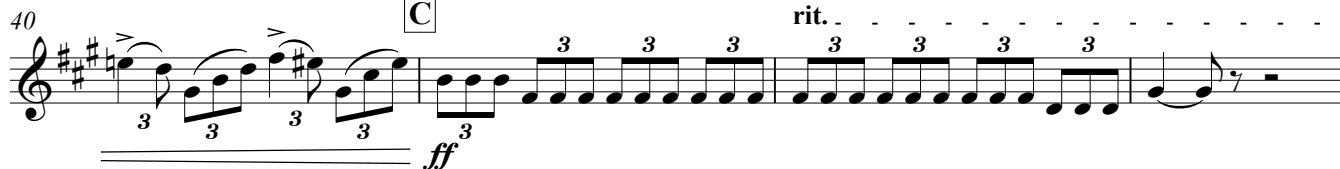
34

**Incalzando**



40

**C**



44

**A tempo**



50

**D**

**Poco stringendo**



A tempo

55



62



67

