

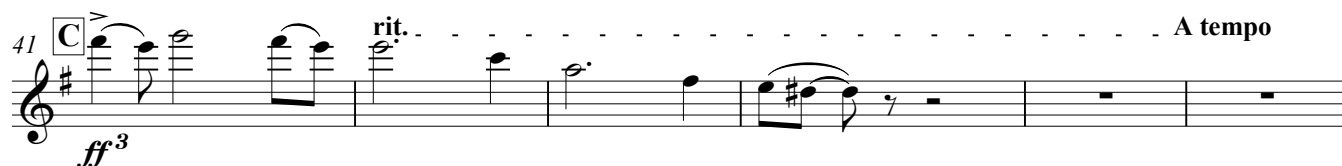
Pas de deux

(steps of two)
from The Nutcracker

arranged for woodwind ensemble by
SHEA LOLIN

PYOTR IILICH TCHAIKOVSKY

Andante maestoso (♩ = 69)



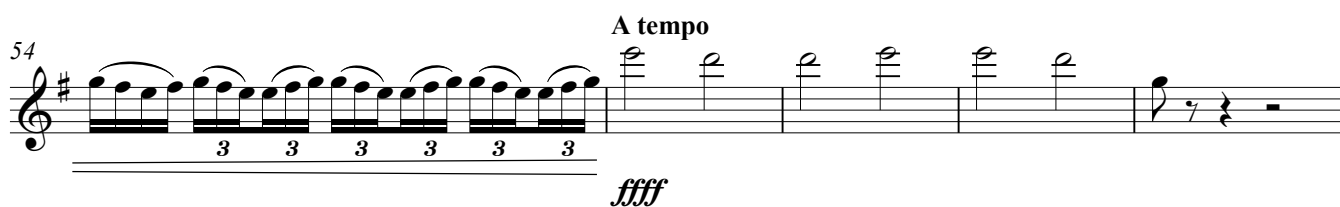
47 *ff marcato*



50 **D** *Poco stringendo*



54 *A tempo*



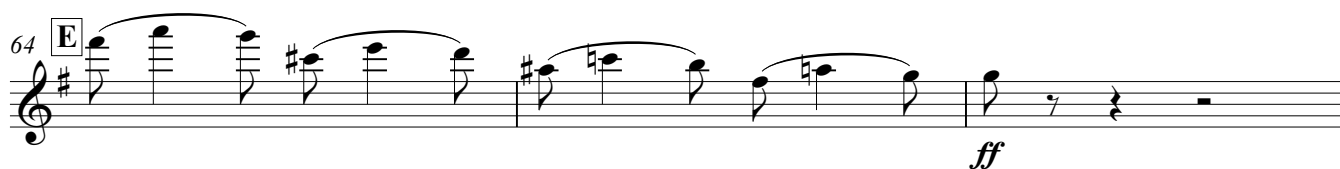
ffff

59



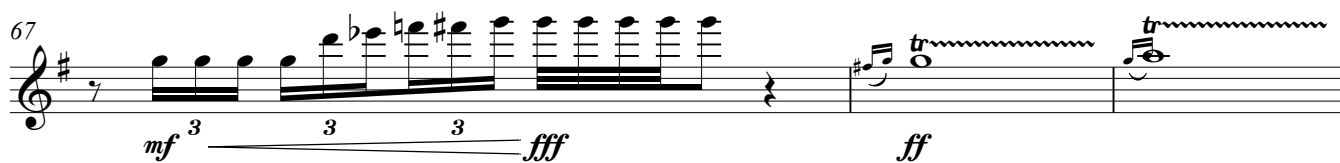
f sf sf ff sf sf

64 **E**



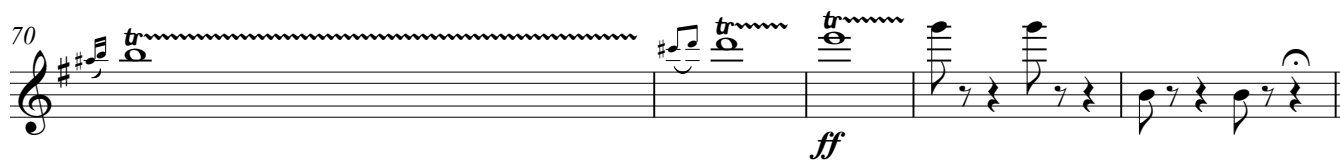
ff

67



mf 3 3 3 fff ff

70



ff